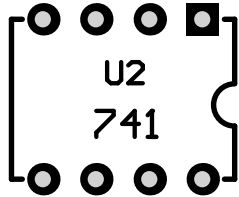
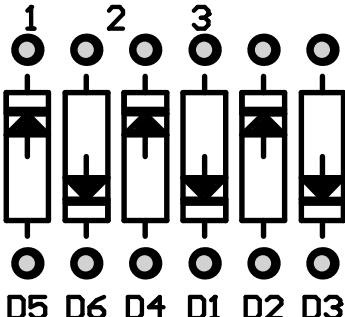


Designator	Value	Comment	Quantity	Description
C1	4.7n	472	1	Capacitor (Semiconductor SIM Model)
C2	100n	104	1	Capacitor (Semiconductor SIM Model)
C3, C6	150n	154	2	Capacitor (Semiconductor SIM Model)
C4	4.7uF	4.7uF	1	Polarized Capacitor (Radial)
C5	1uF	1uF	1	Capacitor (Semiconductor SIM Model)
C7	10n	103	1	Capacitor (Semiconductor SIM Model)
C8	10uF	10uF	1	Polarized Capacitor (Radial)
C9	150pF	151	1	Capacitor ,Ceramic Disc
C10	220uF	220uF	1	Polarized Capacitor (Radial)
C11	1uF	105	1	Capacitor (Semiconductor SIM Model)
C12	220n	224	1	Capacitor (Semiconductor SIM Model)
D1, D2, D3, D4, D5, D6		Diode 1N914	6	High Conductance Fast Diode
D7		Diode 1N4001/7	1	1 Amp General Purpose Rectifier
DC Jack		DC Jack	1	2.1 mm DC Jack
IN, OUT		In/ Out Jack	2	NMJ6HCD2
LED		LED1	1	3mm clear LED (Red)
Led R	4.7k	Yellow, violet, red, gold	1	Resistor
R1	10k	Brown, black, orange, gold	1	Resistor
R2	47k	Yellow, violet, orange, gold	1	Resistor
R3	56k	Green, blue, orange, gold	1	Resistor
R4	1.2k	Brown, red, red, gold	1	Resistor
R5	8.2k	Gray, red, red, gold	1	Resistor
R6	560k	Green, blue, yellow, gold	1	Resistor
R7, R18	1M	Brown, black, green, gold	2	Resistor
R8	5.6k	Green, blue, red, gold	1	Resistor
R9	330k	Orange, orange, yellow, gold	1	Resistor
R11	62k	Blue, red, orange, gold	1	Resistor
R12, R14	47R	Yellow, violet, black, gold	2	Resistor
R13	470k	Yellow, violet, yellow, gold	1	Resistor
R15, R17	220k	Red, red, yellow, gold	2	Resistor
R16	820k	Gray, red, yellow, gold	1	Resistor
Sustain, Tone	B10k	B10k	2	Potentiometer
SW1	3PDT	Footswitch	1	SWITCH 3PDT
U1		4558	1	Dual Op Amp
U2		LM741	1	Single Op Amp
Volume	B100k	B100k	1	Potentiometer

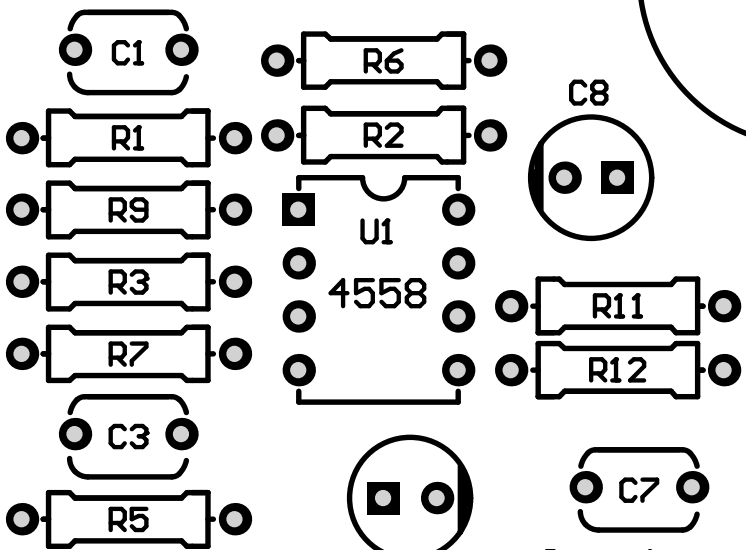
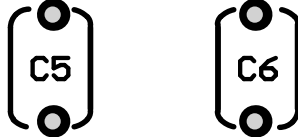
78



Volume



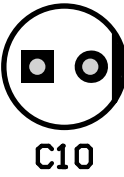
D5 D6 D4 D1 D2 D3



U1
4558

C4

Sustain

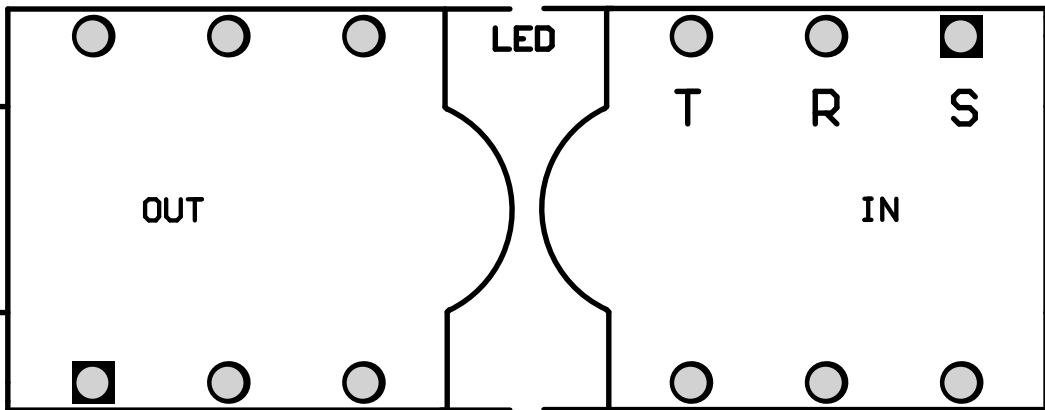
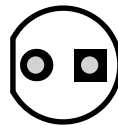


C10

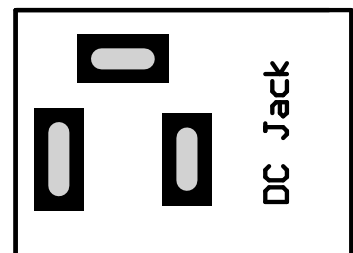
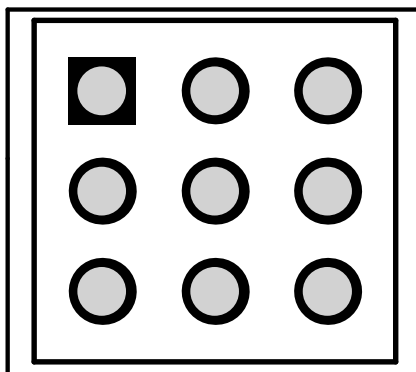
Tone



1 2 3



SW1



DC Jack



Led R